

ETHERNET OVER COAXIAL

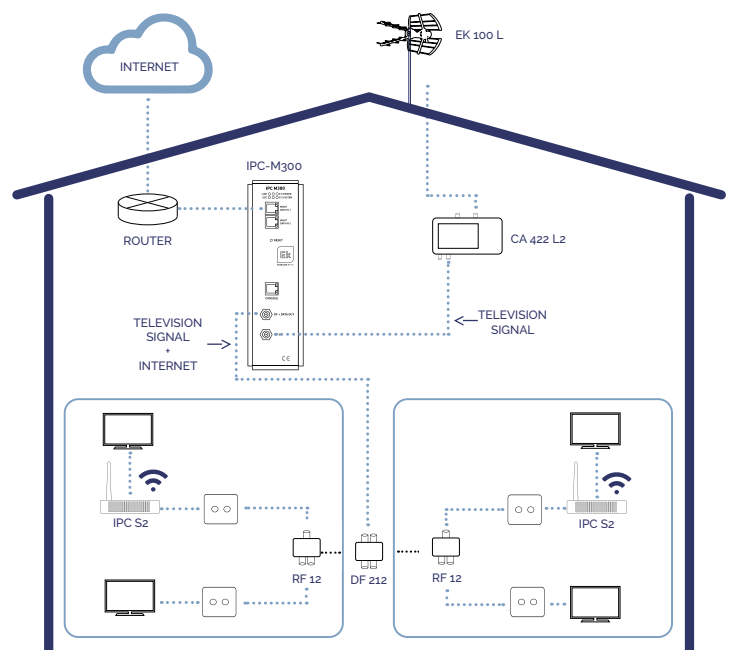
IPC M300



- ✓ Master equipment
- ✓ Transmission IP signal over coaxial cable
- ✓ Work band 7,5-65 MHz
- ✓ Speed 600 mbps on physical layer
- ✓ Up to 253 users (Ekoax slaves)
- ✓ Possibility of remote management
- ✓ Optimized configuration menu for simple system provisioning.
- ✓ Complete provisioning of IPC 24 and IPC AC equipment.
- ✓ Configuration of templates of all parameters, including WiFi, of IPC 24 user equipment and IPC AC.



IPC M300





TECHNICAL TABLE

REFERENCE	IPC M300
Code	250019
Operating characteristics	
RF Parameters	
Frequency	7,5 – 65 MHz
Output level	120 dBuV
Minimum Recommended Input Level	43 dBuV
Return loss	> 16 dB
Transmission speed	
Speed on physical layer	600 Mbps
Speed on MAC layer	300 Mbps
Modulation	OFDM-2690 carriers 4096/1024/256/64/16/8-QAM, QPSK, BPSK, ROBO
Work band	TDMA / CSMA
Encryption	AES-128
Standards	
EOC Standard	IEEE P1901 HomePlug AV
Ethernet protocols	IEEE802.3ab, IEEE802.3, IEEE802.3x, IEEE802.3u, IEEE802.1P, IEEE802.1Q
Software	
Method of use	WEB, CLI y SNMP
Software characteristics	VLAN, QoS, bandwidth control, limitation "broadcast storm",...
Conexions	
RF Conexion	1 RF IN-MIX (F connector) 1 RF OUT (F connector)
Ethernet interface	2 x port 10/100M/1000M Self-adaptive Ethernet (RJ45)
Power	100-240 Vac / 50-60 Hz
Consumption	< 10 W